



Garnett Commercial Real Estate, Inc.
7807 Baymeadows Road East
Suite 405, Jacksonville, FL 32256
904-855-8800
jgarnett@ccim.net
www.jackgarnett.com
Florida Licensed Real Estate Broker



GARNETT
COMMERCIAL
REAL ESTATE, INC.

**OFFICE SPACE
FOR LEASE**

**6022 San Jose Blvd.
Jacksonville, FL 32217
SAN JOSE WEST BLDG.
HIGHLY VISIBLE
DISTINCTIVE ARCHITECTURE**



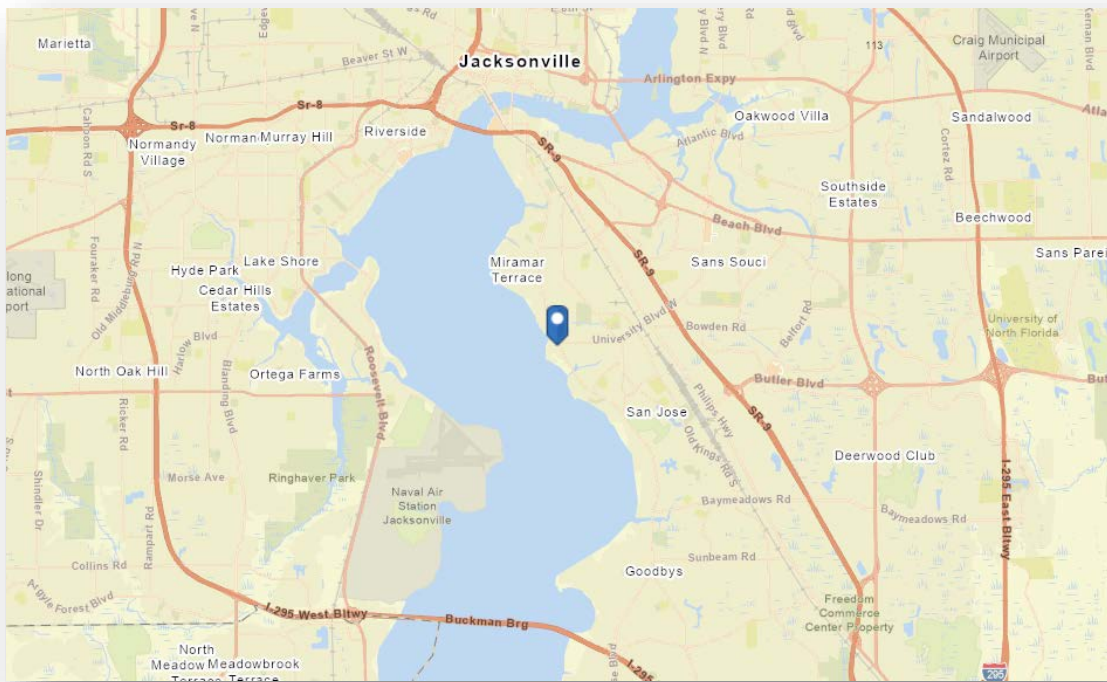
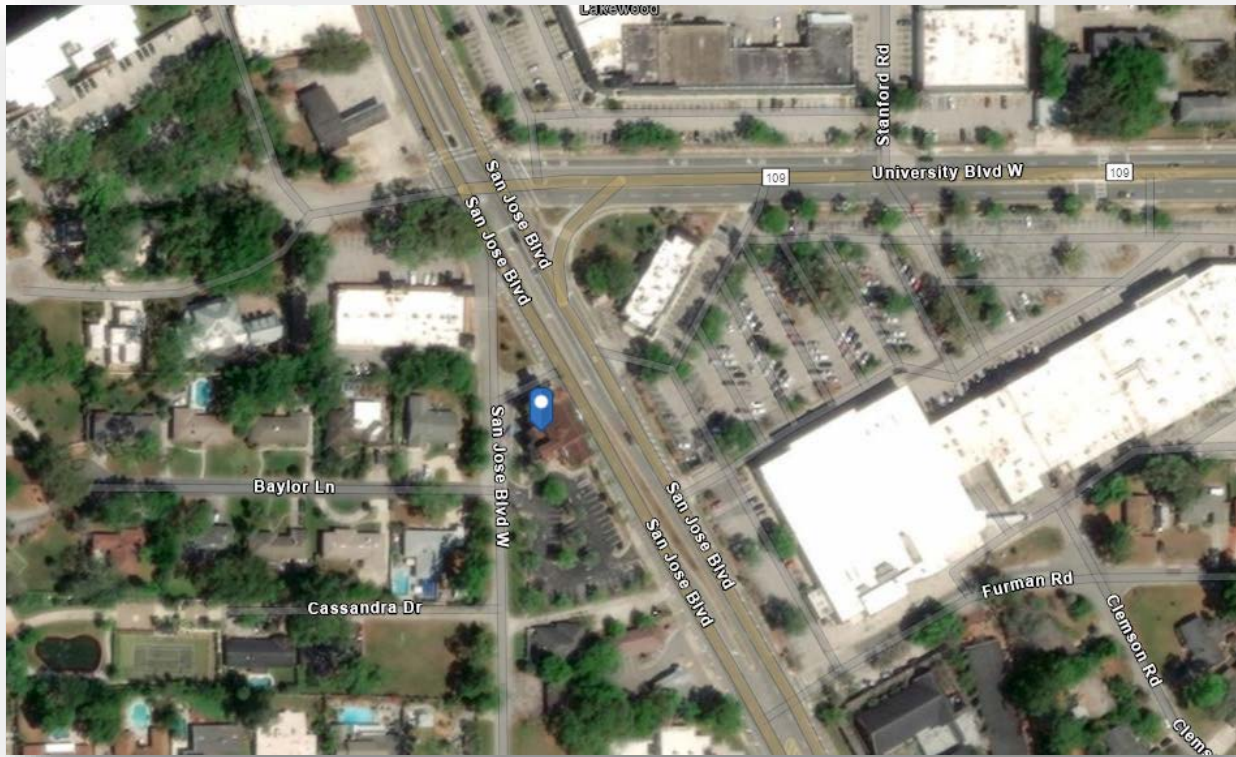
6022 San Jose Blvd., Jacksonville, Florida 32217

Building Size & Type:	10,124 +/- SF 3 Story Suburban Office Building.
Available Suites:	Suite 100-N / 1,454 RSF with Prominent Lobby Entrance. (Available 7-1-26)
Base Rental Rates:	\$25.50 PSF Annually (FULL SERVICE).
Operating Expense/R.E. Tax Stop:	To be established by the actual operating expenses and real estate taxes for the calendar year 2026.
Parking:	Free. 41 Surface Spaces. First Come, First Serve. 4.19 Spaces per 1,000 SF of tenant space.
Location:	Located within a Highly Desirable Lakewood area near the Intersection of University Blvd. and San Jose Blvd.
Property Owner On-site:	Property Owner has their office in the building.
Property Management:	Professionally Managed by Weaver Realty Group. LLC.
Amenities:	Location offers easy access to Banking, Restaurants and Retail Services available in the Lakewood and San Marco areas.
Proximity:	In close proximity to the Downtown North & South Banks, Southside, Mandarin and San Marco areas of Jacksonville. And short drive times to Multi-Family & Single-Family housing in all price ranges.

Garnett Commercial Real Estate, Inc.
7807 Baymeadows Road East, Suite 405, Jacksonville, FL 32256
904-855-8800 / jgarnett@ccim.net / www.jackgarnett.com

Disclaimer: Details herein are believed to be correct; however, it is subject to errors, omissions, price change or withdrawal without notice.

**GARNETT
COMMERCIAL**
REAL ESTATE, INC.





Garnett Commercial Real Estate, Inc.
7807 Baymeadows Road East, Suite 405, Jacksonville, FL 32256
904-855-8800 / jgarnett@ccim.net / www.jackgarnett.com

GARNETT
COMMERCIAL
REAL ESTATE, INC.



Suite 100 North

